

SECTION 21, T.7N., R.1E., S.L.B. & M.  
LIBERTY DISTRICT

SCALE 1" = 400'

TAXING UNIT: 36

SEE PAGE 6

SEE PAGE 10

SEE PAGE 15-4

SEE PAGE 15-1

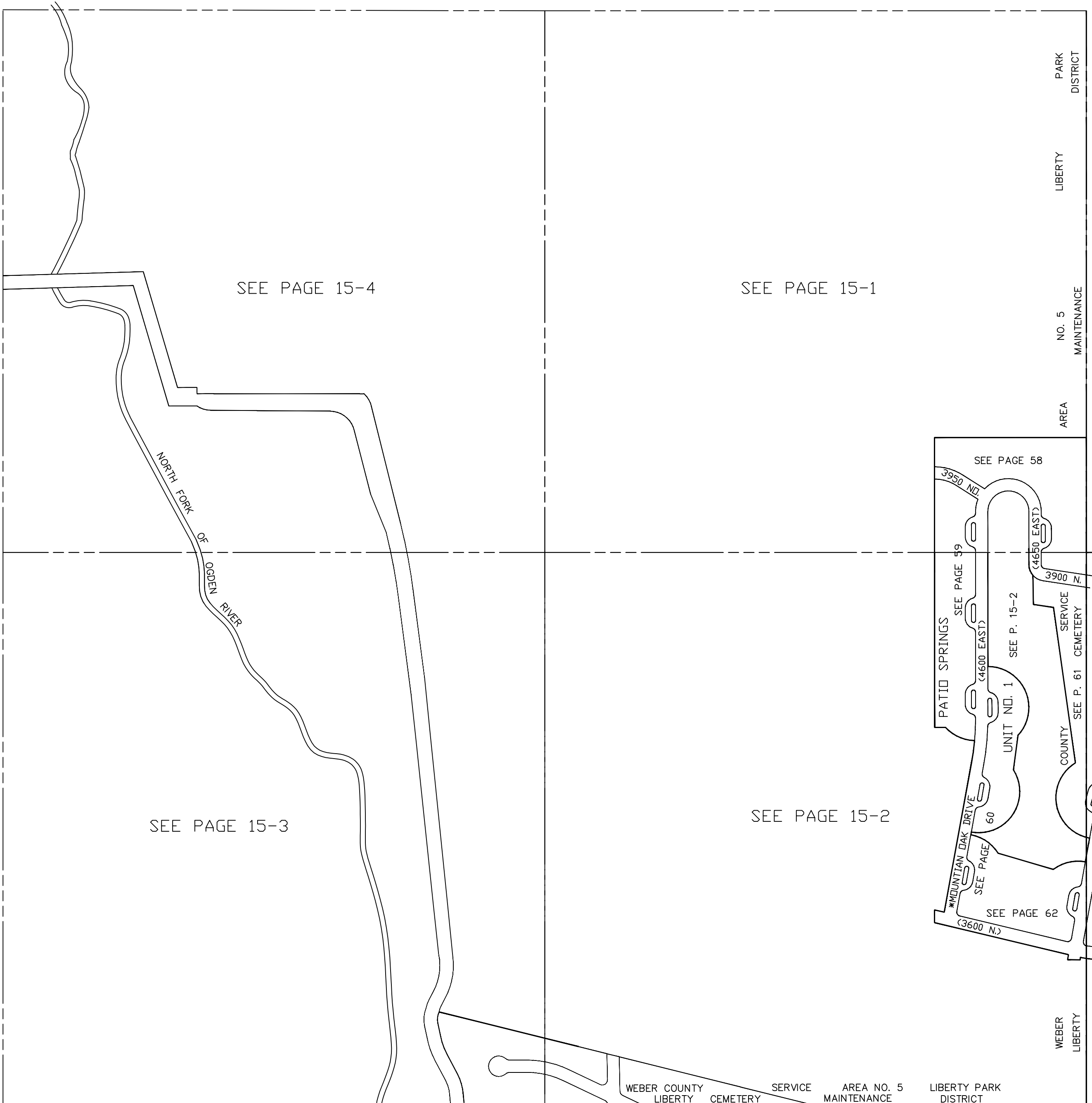
SEE PAGE 13

SEE PAGE 15-3

SEE PAGE 15-2

SEE PAGE 17

SEE PAGE 16



SEE PAGE 22

WEBER COUNTY LIBERTY SERVICE AREA NO. 5 LIBERTY PARK DISTRICT  
LIBERTY CEMETERY MAINTENANCE DISTRICT

SEE PAGES 73 & 74

EDEN HILLS DR.  
EDEN HILLS SUB. NO. 3

3450 NO. ST.

\* STREET NAME CHANGE  
19-JAN-95 1744-1014